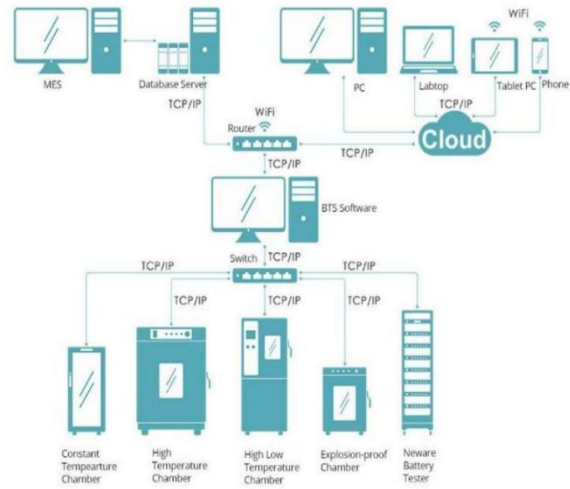
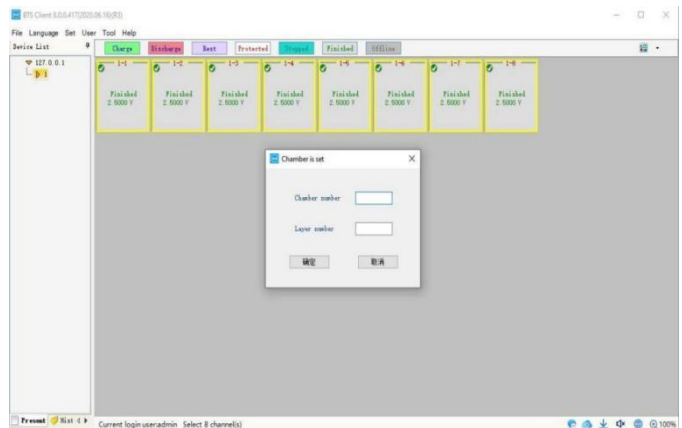
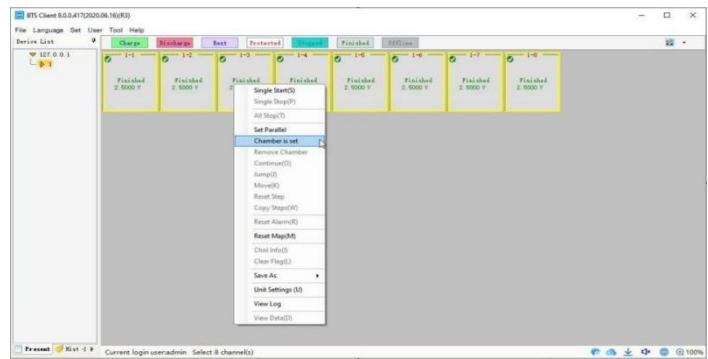


Mini All-in-One Testing System	
1. Material Code	WHW-25L-16CH
2. Description	Product Specification
3. AC Input	AC 220V±10% 50Hz (compatible AC110V±10% 60Hz) Single phase + Protective earth ground
4. Power	0.2kW
5. Input Current	1A(220VAC)/2A (110VAC)
6. Volume & Size	
6.1 Standard volume	25L
6.2 Inner size	W360mm×D300mm×H235mm
6.3 External size	W440mm×D580mm×H410mm
7. Weight	About 45kg
8. Performance	
8.1 Operating environment	Operating temperature is +25°C、Relative humidity≤85%、 Under no samples situation
8.2 Temperature range	15~60°C
8.3 Temperature fluctuation	≤1°C (no load、 temperature stability)
8.4 Temperature deviation	±2.0°C (no load、 temperature stability)
8.5 Rise time	25°C~60°C ≤40 min(No load)
8.6 Cooling time	25°C~15°C ≤60 min (No load)
9. Structure features	
9.1 Thermal insulation main tenance structure	Extern materials: High quality cold rolled steel plate, Surface spray and baking paint treatment Inner materials: Stainless steel plate SUS304 Chamber insulation materials: PU Foaming
9.2 Control panel	Control panel touch control button
9.3 Cooling/Heating method	Semiconductor, DC FAN
9.4 Configuration	Door: Insulating stalinite LED light Cell holder board
9.5 Electrical system	Controller: LED HMI Setting mode: Touch screen Control type: Forced circulation ventilation

10.2 Connection diagram



10.3 Software

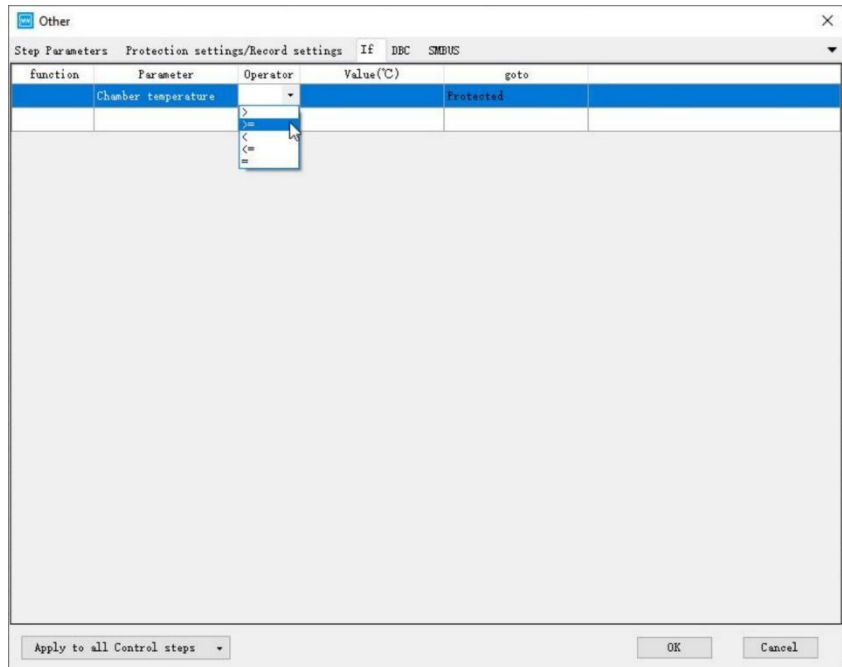
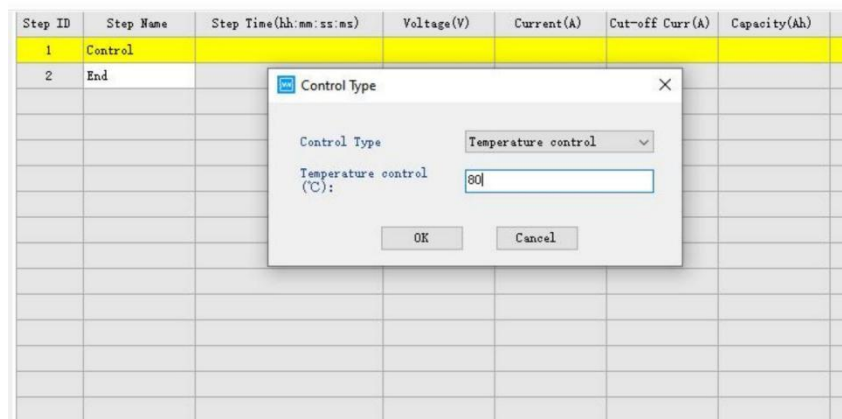
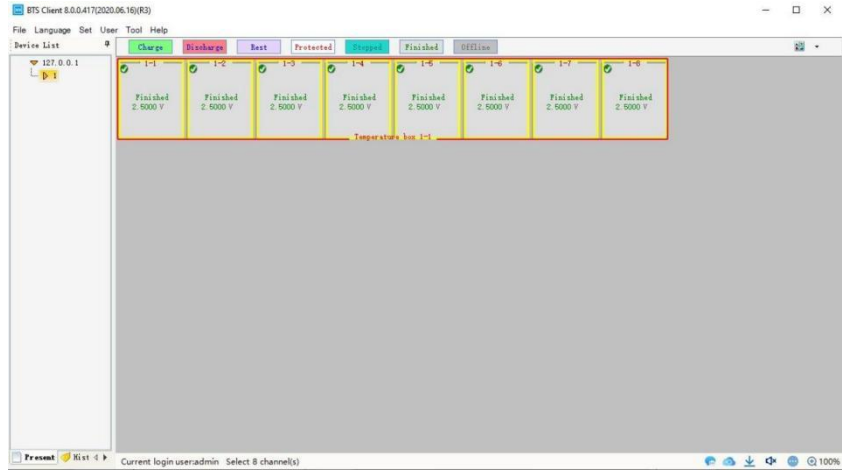


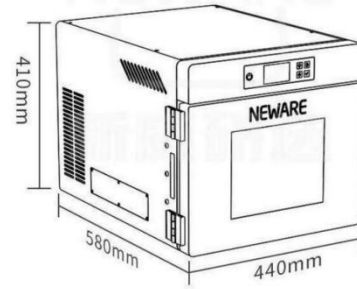
Communicate type: Ethernet

10. Connecting with Neware battery system

10.1 Hardware

With RS485port





Picture for reference, please confirm the actual product

Different Range of Neware cycler will be integrated in chamber.

5V10mA/ 5V20mA/ 5V50mA optional.

(Maximum 16 channels)

5V10mA	Range1: 5 μ A~1mA; Range2: 1mA~5mA; Range3: 5mA~10mA
5V20mA	Range1: 5 μ A~1mA; Range2: 1mA~10mA; Range3: 10mA~20mA
5V50mA	Range1: 5 μ A~1mA; Range2: 1mA~25mA; Range3: 25mA~50mA

Special coin cell holder with PCB board